



Wiltshire Challenges

- Demographics
- Finance
- Increasing complex needs
- Ageing population
- Resources
- Duplication and overlap
- Gaps in support



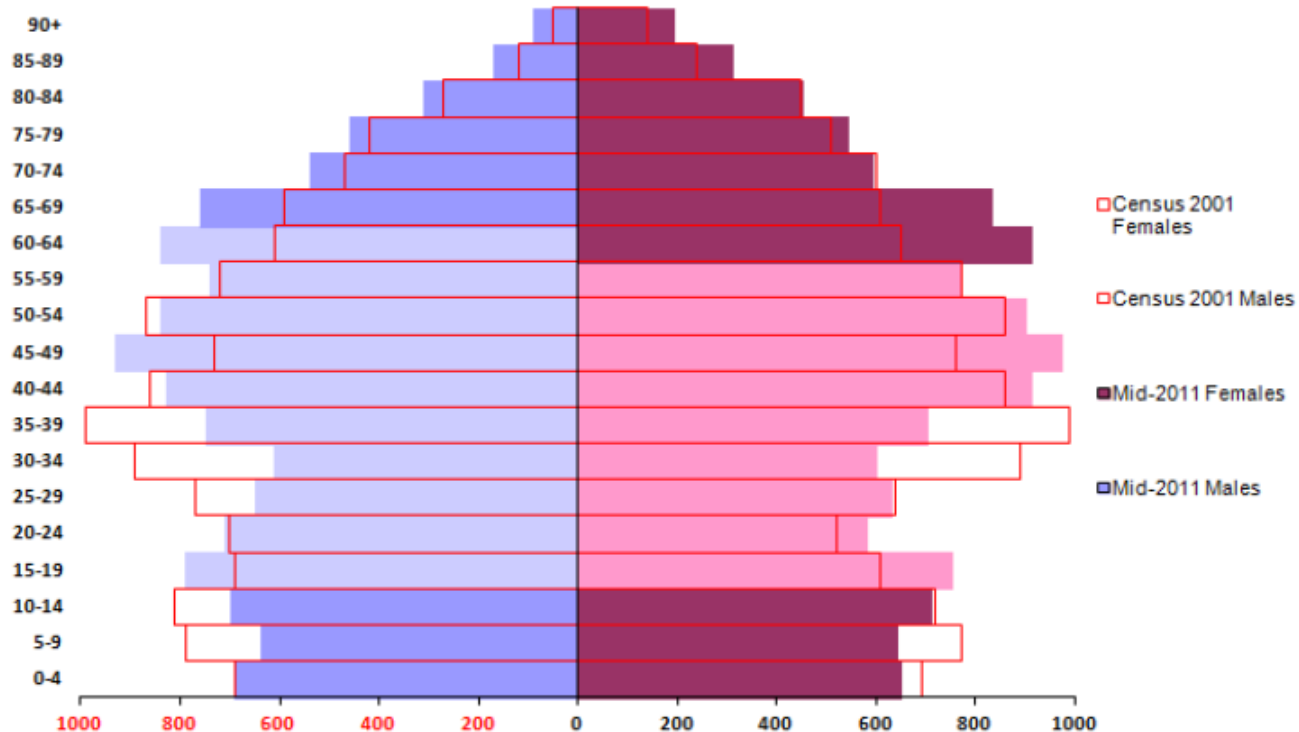
Why a local Health and Wellbeing group?

- A local forum to co-ordinate local services
- Initiate & deliver local collaborative health and Wellbeing projects through the Area Board & partners
- Represent views of vulnerable groups to the Area Board
- Work with Wiltshire Council staff to design and develop new services and review existing ones
- Identify funding opportunities
- Help people who feel isolated and excluded

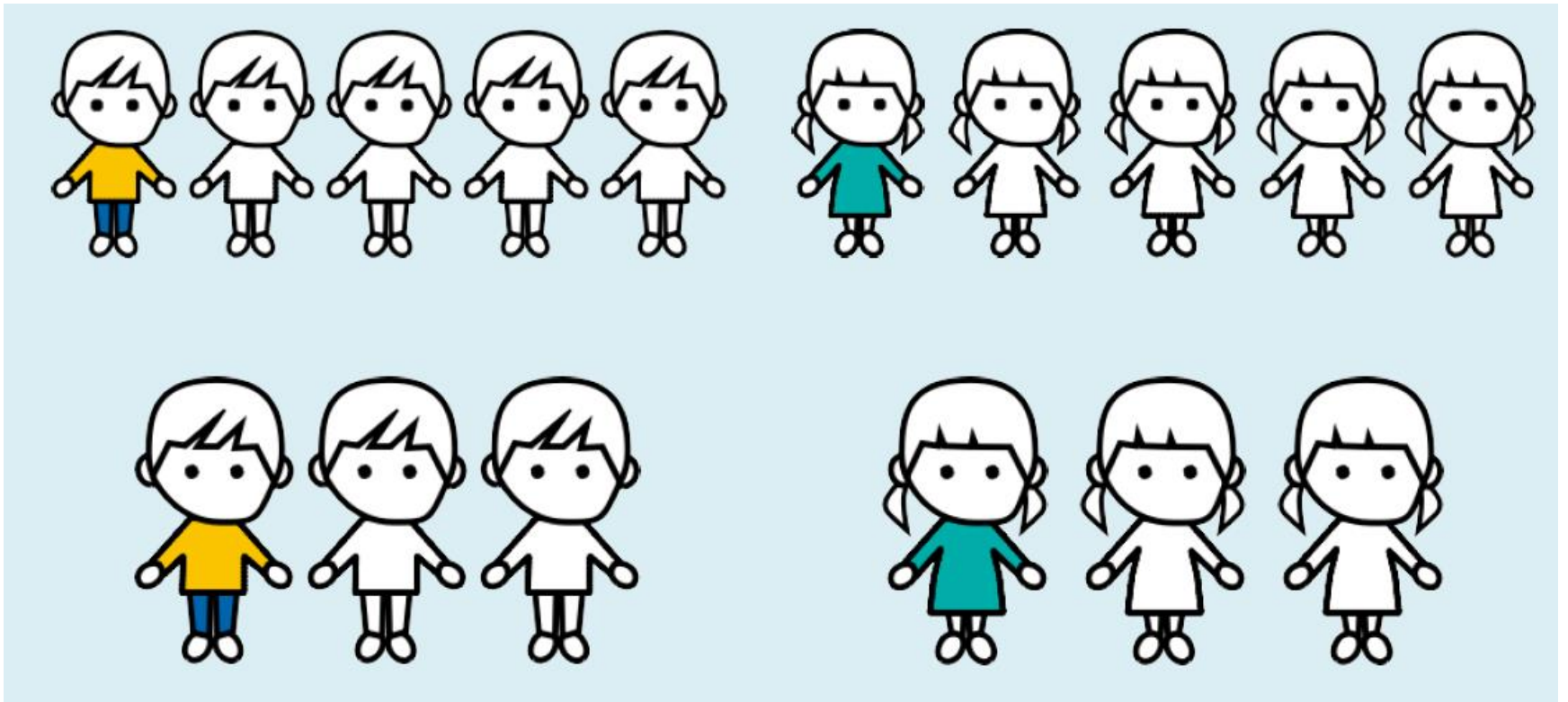
Community Area Joint Strategic Assessment

- Joint Strategic Assessments are a statutory duty
- The Community Area JSAs (CAJSAs) provide data, information, knowledge and evidence about each area in Wiltshire
- We are currently refreshing the CAJSAs with community events to share the updated information planned between Nov 2016 and Feb 2017
- The updated CAJSAs will include a chapter focussing on Older People
- Warminster's current CAJSA can be accessed via <http://www.wiltshirejsa.org.uk/issue-location/warminster/>

Warminster's population



Childhood Obesity & Emotional Wellbeing



NHS Health Check Programme

Just 20 minutes of your time
even if you feel fit and well,
it's worth having your
NHS Health Check

Free NHS Health Check for 40-74 year olds
Helping you prevent heart disease, stroke, diabetes, kidney disease and dementia.

Eligible patients will receive an invitation from their GP on their 40, 45, 50, 55, 60, 65, 70 and 74 birthday. If you are outside the age range and concerned about your health you should contact your GP.

NHS HEALTH CHECK
Helping you prevent
diabetes
heart disease
kidney disease
stroke & dementia

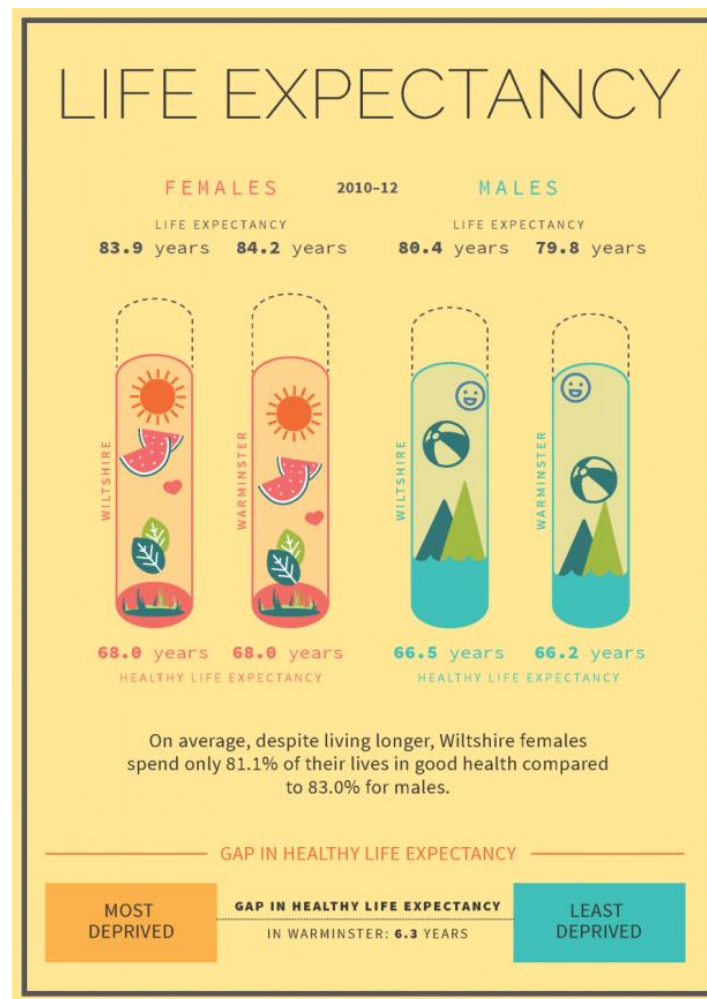
NHS
Wiltshire Council
Where everybody matters

- A single, universal, integrated check for all aged 40 – 74 every 5 years
- Measures risk of cardiovascular disease
- Gives support to reduce risk / maintain low risk
- Offers a tailored package of health improvement advice, support and services

Warminster	Wiltshire
Offered: 1, 057	Offered: 29, 216
Received: 480	Received: 14, 008
Uptake: 45.4%	Uptake: 48%

Ageing Well

- Social isolation
- Falls & bone health
- Flu vaccinations





Warminster Challenges (Older people)

- 5,447 people between the ages of 65 and 90+ , this is predicted to rise to 6,680 by 2026
- Warminster has the fifth largest population of over 85s in Wiltshire (760) average 10% of over 65s feel lonely ‘some or all of the time’, this would equate to 545 people in Warminster
- Area Board Older People’s event – loneliness, isolation, transport



Warminster Challenges (Older people)

- identify and engage with the hard to reach groups, the 'oldest old' and those with multiple long term health conditions
- befriending service has 12 people on the waiting list for the service in the Warminster area.

What does Social Care do?

- Helping vulnerable people live their lives comfortably and supporting independence
- Working to statutory requirements (Care Act 2014)
- Local Authority duty to assess and meet eligible needs
- Provision of services is dependent upon eligibility and a financial means test
- The majority of people who receive social care fund their own care and support



How do we do it?

Information, advice and signposting

www.yourcareyoursupportwiltshire.org.uk

Occupational Therapy

Aids and adaptations

Disabled facilities grants

Manual handling

Social Work

Facilitate resolution of complex social issues

Safeguarding of vulnerable adults

Assessment of needs and eligibility for long-term care




Following assessment

Care Homes – Only considered once all options to support someone at home have been exhausted. Places are purchased from independent residential or nursing homes

Care at Home –including personal care, equipment, tele-care, day services

Direct Payments – Some people prefer a direct payment to arrange their own care.



Social care services funded by the Council for people in Warminster

5447 Over 65s

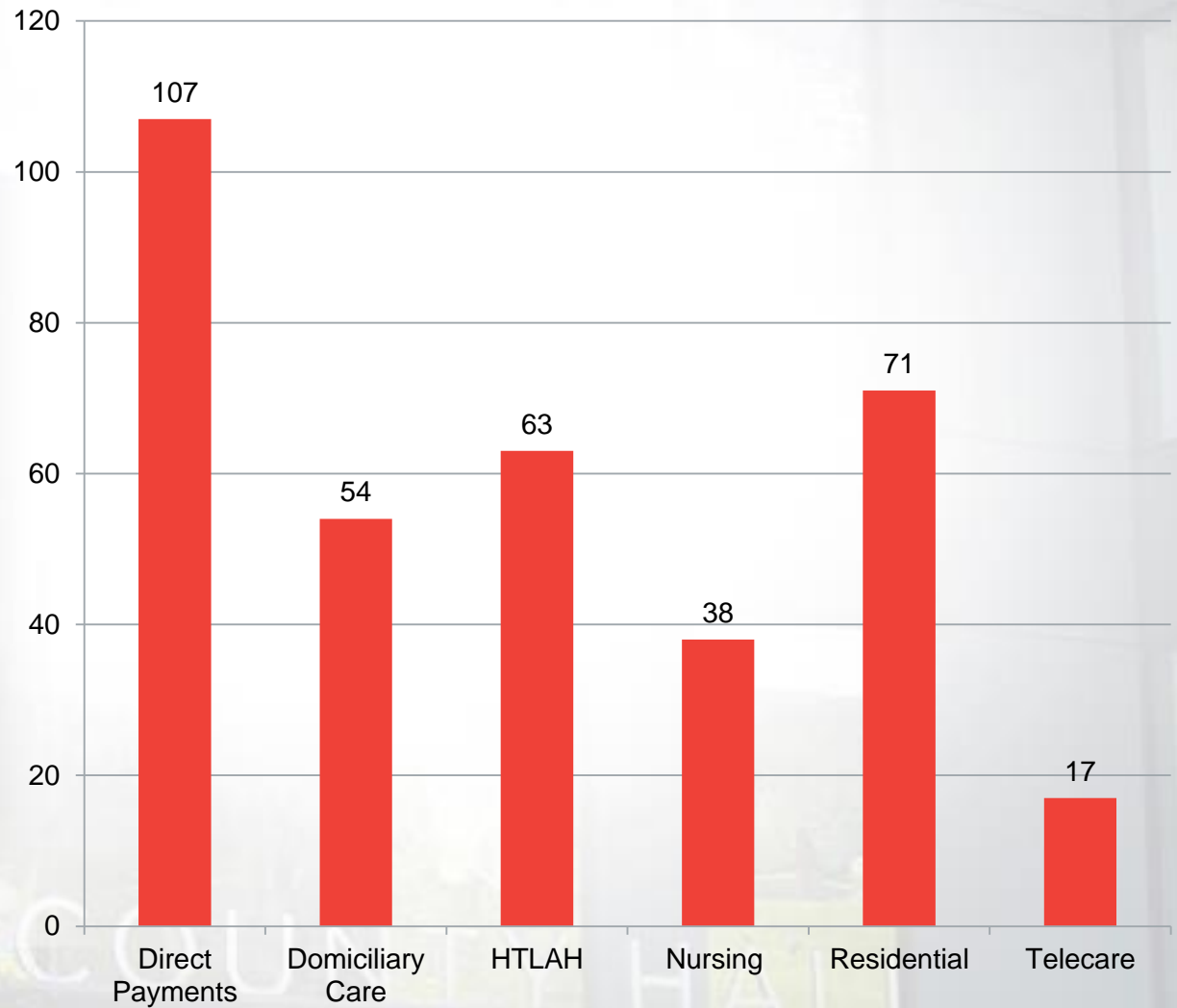
6.8 million value of care and support commissioned on behalf of customers (excludes self funding market anything up to 50%)

373 people in receipt of funded care services

Less than 10% of over 65s in receipt of care commissioned by the Council



Services for people in Warminster



Unpaid carers

2,548 people in Warminster providing unpaid care

637 people aged 65 and over providing unpaid care

8.5% of the total population aged 65 and over providing unpaid care

150 carers registered with Carers support Wiltshire and 550 newsletter recipients



The Clinical Perspective

- Workforce
- Activity
- New Services
- Funding
- Access vs continuity
- Self care
- Treatment expectations
- Complexity and co-morbidities
- Prescribing and polypharmacy
- Diversity and deprivation

Healthwatch Wiltshire's purpose is....



- To promote the voice of the consumer in the development of health and social care strategies;
- To provide and promote effective signposting and information systems;
- To promote, monitor and inspect the quality of services commissioned to meet health and social care needs (enter and view)
- To tell the Wiltshire story.



Our priorities 2016-17



- Making sure local people are involved in health and care
 - Children and young people
 - People living with dementia and their carers
- Keeping an eye on the quality of health and care services
- Influencing health and care in Wiltshire - on behalf of local people
- Making sure that Wiltshire people have access to good quality information about health and care services





Health and Wellbeing Group: The Big Picture

- Vision
- Governance
- Finance
- Possible structure
- Support